

EMMANUEL MISSION SR SEC SCHOOL, BEAWAR
ONLINE CLASSES
WEEK - 36 (02.11.2020)
CLASS - IV

English: https://youtu.be/CItp_TrIM50

Hindi: <https://youtu.be/ldpRrhe6EGk>

Mathematics: <https://youtu.be/LBGyIAk6oOY>

General Science: Kindly see below

Social Studies: <https://youtu.be/TWOYvlqGD4o>

Computer Science: Kindly see below

General Knowledge: Kindly see below

Moral Science: Kindly see below

Physical Education: <https://youtu.be/5pfSYotcpO8>

Music (Guitar): https://youtu.be/7UD2TLli_dM

Music (Keyboard): https://youtu.be/dGY_KJyqO-w

Health & Sanitation: <https://youtu.be/u5jeTUBRV5U>

Art Education: <https://youtu.be/pqIJYvyNqSM>

EMMANUEL MISSION SR SEC SCHOOL, BEAWAR

SCIENCE

CLASS – IV

Self Assessment, Ch- 3, Soil

(A) Tick the correct answers :-

1. Soil erosion is caused due to
(a) Overgrazing (b) afforestation (c) step farming (d) weathering
2. The middle layer of soil in a soil profile is called the
(a) bed rock (b) parent rock (c) subsoil (d) top soil

(B) Fill in the blanks :-

1. The bottom layer of soil is called _____.
2. _____ particles are the largest soil particles.

(C) True or false

1. Terraces or steps slow down the flow of rain water. ()
2. Silt is not a part of soil. ()

(D) Answer these questions :-

- Q1. What is parent rock?
- Q2. What is humus?

EMMANUEL MISSION SR SEC SCHOOL, BEAWAR
COMPUTER
CLASS : IV

Revision : Unit - 1 To 4

Lesson :- 5 : More Logo Commands

ANSWERS OF EXERCISES :

1. Fill in the blanks with the word given.

- a. A Procedure consists of three parts. (two / three)
- b. In a procedure, you can execute the statement together. (statement / words)
- c. Recall command is used to recall a saved procedure. (Repeat / Recall)
- d. Delete command is used to delete a procedure from the memory. (Delete / Remove)
- e. To run the procedure, type the procedure name in the Input box and press enter. (Enter / Backspace)

2. State True or False.

- a. A Procedure has two parts. (F)
- b. We cannot remove the procedure, once it is written. (F)
- c. A Procedure can be given any name. (F)
- d. A procedure name starts with “ To” followed by name of the procedure. (T)
- e. The name of a procedure is mentioned in the body. (F)

3. Answer the following.

a. What is a Procedure?

Ans. A procedure is a set of commands to perform a particular task. It is assigned name.

b. What are the parts of a Procedure? What do they contain?

Ans. A Procedure in logo has three parts.

Title : This is the first line. It means a name given to procedure. It begins with the word ‘ To ’ followed by Procedure name.

Body : It is the segment having the commands to draw the desired figure.

End : last line in every procedure is word ‘END’ which denotes the end of procedure.

c. What are the rules for writing a Procedure?

Ans. Rules for Naming the procedures :-

1. The name of a Procedure can have an Alphabet, a Number or any symbol.
2. The name cannot have a ‘ blank space ’
3. The name cannot be any Logo Command.

d. How can you save a Procedure?

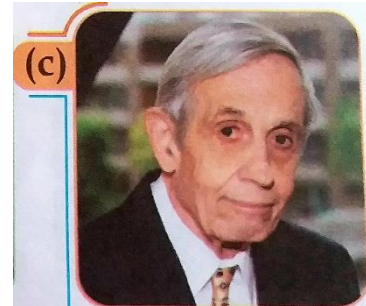
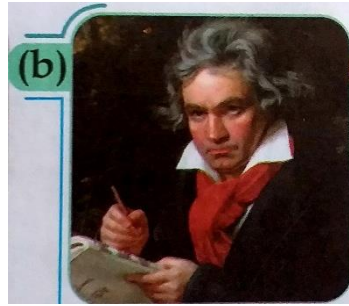
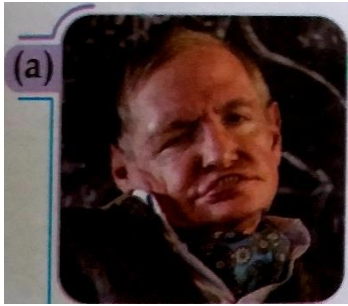
Ans. To save the procedure steps are :

1. You need to go to the main MSW logo screen and select File / Save.
2. A save as dialog box will open, type the desired file name and click on save button.

EMMANUEL MISSION SR SEC SCHOOL, BEAWAR
GENERAL KNOWLEDGE
CLASS : IV
Questions - Answers

Lesson – 17 : Women Achievers

1. Identify the following people who despite their disabilities, are known across the world, for their relentless hard work and dedication :



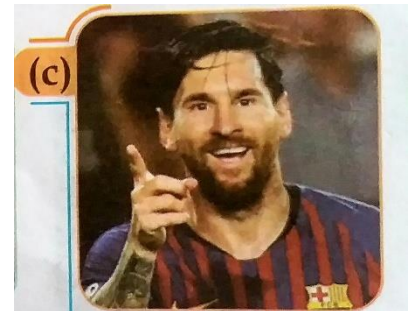
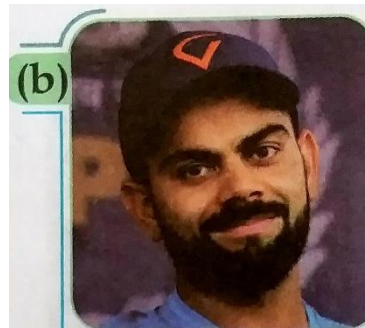
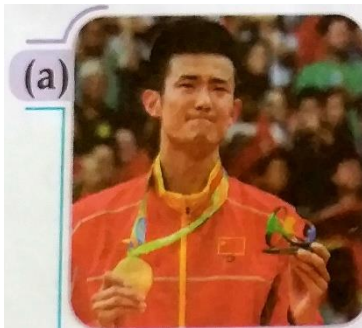
ANSWER :-

a. Stephen Hawking

b. Ludwig van Beethoven

c. Jhon Nash

2. With the help of the clue box, identify the sports of the following sports stars :



a. Badminton
Football

b. Cricket

c.

LESSON – 18 : Games On Board

ANSWERS

1. A simple board game for two to four players in which players move their pieces according to the throw of dice. **LUDO**
2. It is also known by other names like housie and tambola and is played in almost every continent. **BINGO**

3. A game played by two players on a board with sixty- four black and white squares. **CHESS**
4. A classic board game with numbered square grids where the players moves forward through ladders or backwards through snakes. **SNAKES AND LADDERS**
5. An indoor game played by two to four players on a square wooden board with four pockets for coins to sink into. **CARROM**

EMMANUEL MISSION SR SEC SCHOOL, BEAWAR
MORAL SCIENCE
CLASS : IV
Self Assessment
Chapter - 9

M.M - 10

Q.1 COMPLETE THE LINES :

1. People who cheat _____ .
2. Stealing can become a _____ .

Q.2 Answer in one or two words :

1. How do we become dishonest ?
2. Why is stealing a bad habit ?